

weldotron® 1220 Series

AUTOMATIC SLEEVE WRAP BUNDLING SYSTEMS WITH MULTIPACK COLLATION CAPABILITY

Weldotron's new 1220 Series automatically collates and wraps individual items into convenient multipacks that are ideal for the distribution requirements of the 90's.

The 1220 Series features a single dial-in control that allows you to choose the multipack pattern of your choice. 1220 Series machines are very efficient and feature a PTC (precision temperature control) seal bar that ensures strong, quality seals. They also feature adjustable solid state controls that permit precise seal time and

temperature regulation for optimum sealing performance with all films.

Whether you have transport packaging needs or require systems to meet the bundling requirements of price clubs and warehouse stores, Weldotron has a system to help you. Couple a 1220 Series sleeve wrapper with a Weldotron production shrink tunnel and you have a moderately priced automatic multipackaging system designed for round-the-clock operation and dependable performance.

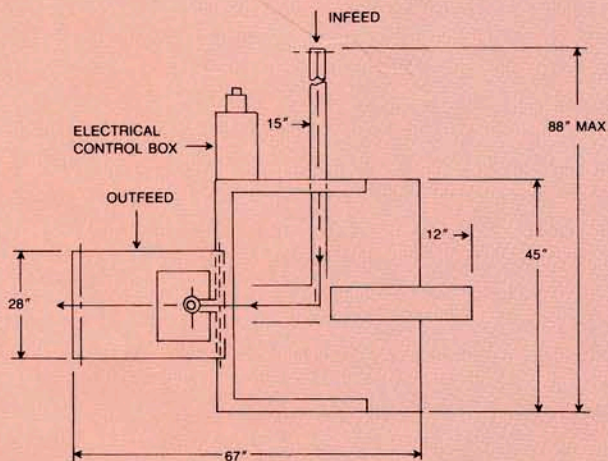


1220 SERIES FEATURES

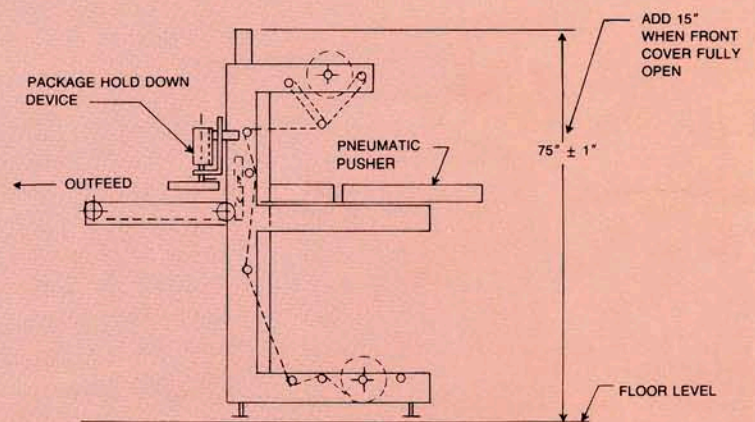
- Programmable Logic Control Operation
- Adjustable Dial Control For Variable Multipack Patterns From 1 to 10 Rows
- (PTC) Precision Temperature Control Sealing
- Powered Belt Infeed Conveyor (specify left or right hand)
- Powered Belt Outfeed Conveyor
- Powered Film Feeding System
- Automatic Air-Operated Product Pusher
- Automatic Package Hold-Down for Multipack Applications
- Speeds to 20 Packages Per Minute
- Heavy Duty Tubular Steel Construction

1220 SERIES SPECIFICATIONS

MODEL:	1222	1223	1224
ELECTRICAL REQUIREMENTS:	230V., 60 HZ., 3Ø, 30 Amp.	230V., 60 HZ., 3Ø, 30 Amp.	230V., 60 HZ., 3Ø, 30 Amp.
AIR REQUIREMENTS:	3 SCFM free air, @ 80 PSI	3 SCFM free air, @ 80 PSI	3 SCFM free air, @ 80 PSI
MAXIMUM FILM WIDTH:	Up to 20"	Up to 30"	Up to 40"
MAXIMUM PACKAGE HEIGHT:	9½"	9½"	9½"
APPROXIMATE MACHINE WEIGHT:	1,400 lbs.	1,400 lbs.	1,400 lbs.
CONTROLS:	On/off switch; package detect; package positioner; dwell timer; safety reset; solid state temperature controller; automatic/manual select switch; start/stop and emergency push buttons; outfeed conveyor, time and seal bar safety switches.		



TOP VIEW



SIDE VIEW

NOTE: SPECIFICATION DRAWINGS ARE FOR MODEL 1223. OVERALL SIZE WILL VARY FOR OTHER MODELS DEPENDING ON MAXIMUM FILM WIDTH CAPACITY.

weldotron®

Manufactured under one
or more USA and Foreign Patents.
Other patents pending.

Printed in U.S.A.